



Chartered Transport Planning Professional

Cat Goumal

Steve Hunter



- Launched in 2008
- Awarded and managed jointly by CIHT and TPS
- Administered by CIHT
- Open to CIHT, TPS and CILT members
- Gaining TPP means you can register as a Chartered Transport Planning Professional
- New Standards introduced in March 2021 following review

Benefits

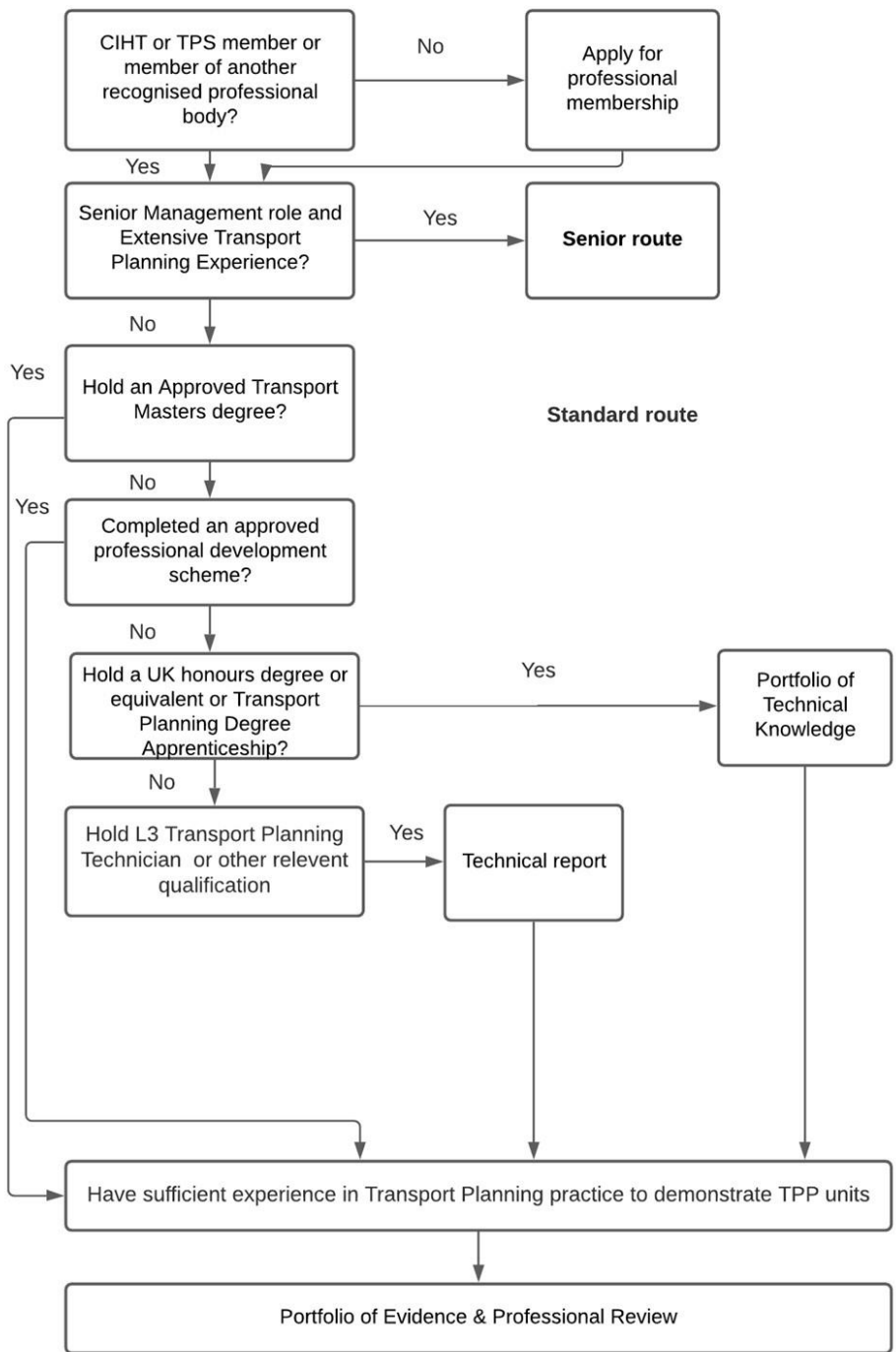
Stand out from the crowd

Showcase your professional competence in transport planning

Professional recognition

Chartered status

Increased career and salary prospects



Routes to CTPP

- Normally at least 5 years' practical transport planning experience
- Membership of CIHT, TPS or CILT

Senior Route

Or

Standard Route

- Approved Masters
- Professional Development Scheme
- PTK/Technical Report

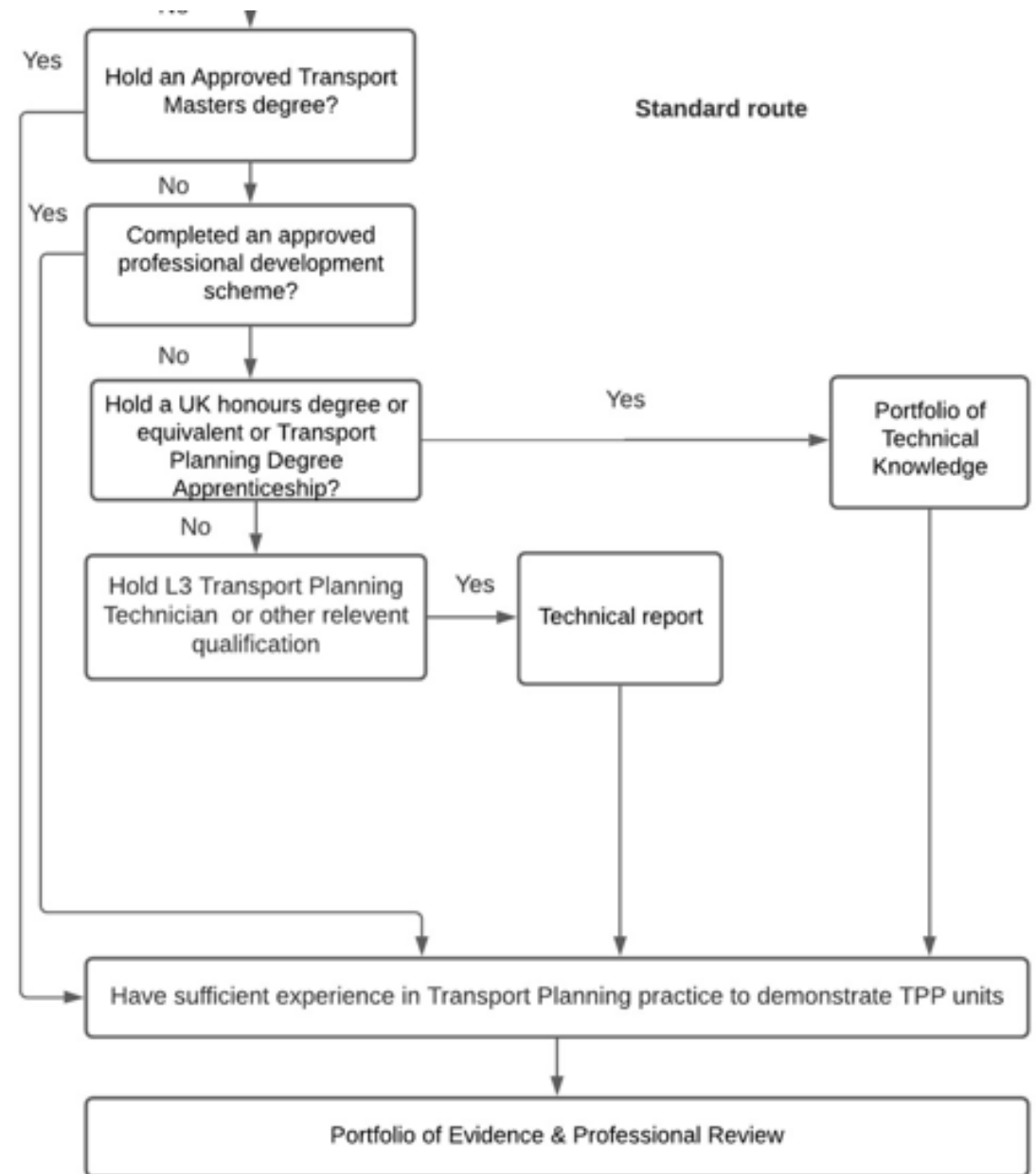
Senior Route



- Evidence of broad knowledge gained from 15+yrs of transport planning experience at a senior level – assessed through a **Senior Route** application.
- You have made a significant contribution to the transport planning profession
- Demonstrate a higher level of competence in more of the units than a Standard Route candidate
- New Guidance and application form for 2023

Standard Route

- **Approved Transport Masters degree**
- Non-approved Masters or degree – submit a **Portfolio of Technical Knowledge**
- Apprenticeship or other relevant qualifications – submit a **Technical Report**
- Completion of approved **Professional Development Scheme** (e.g.TPS PDS) plus a period of gaining further practical experience before proceeding to professional review



Professional Review Assessment Process

The Professional Review has two elements

- Portfolio of Evidence
- Professional Interview which includes a 10 minute presentation

Competence levels

Awareness

a general understanding of the area, including it's role within transport planning practice

Knowledge

A deeper understanding of the techniques and technologies involved and their application

Experience

an ability to carry out work under supervision, with the underpinning knowledge

Proficiency

an ability to carry out work without supervision and to supervise others based on both experience and the underpinning knowledge

Unit Ref.	Unit Title	Minimum Requirement
Professional Units		
P1	Leadership	P
P2	Communication and Collaboration Skills	P
P3	Personal Commitment to Professional Standards and the Profession	P
Core Technical Units		
T1	The Policy Context	E
T2	Laws and Regulations	E
T3	Data	P
T4	Transport Models and Forecasting	E
T5	Appraisal and Evaluation	E
T6	Stakeholder Engagement	E
Additional Technical Units		
T7	Developing Strategic and Master Plans for Transport	A
T8	Applying the Principles of Transport System Design	A
T9	Changing Travel Behaviour	A
T10	Commercial and Operational Management of Transport Systems	A

Proficiency in three Technical Units (T1 to T10) in addition to Data; and
Experience in one Additional Technical Unit (T7 to T10) (unless you have already chosen one of these units to demonstrate Proficiency)



Demonstrating proficiency in the bus sector

- **Data (T4)**
 - How you decided what data you needed, sourced it, cleaned it, analysed it, and checked it was suitable?
- **Transport Systems Design (T8)**
 - How you identified locations where improvements were needed, and selected appropriate interventions?
- **Commercial and Operational Management (T10)**
 - How you identified the passenger or operational need for a service change, and established potential impacts?



Demonstrating proficiency in the bus sector

- **The Policy Context (T1)**
 - How your bus strategy or plan fits with transport and wider policy, including how it might attract funding?
- **Stakeholder Engagement (T6)**
 - How did you set out to establish the views of a range of stakeholders, and how did you use that information?
- **Laws and Regulations (T2)**
 - How did your proposal respond to and work within the existing bus regulatory structure?



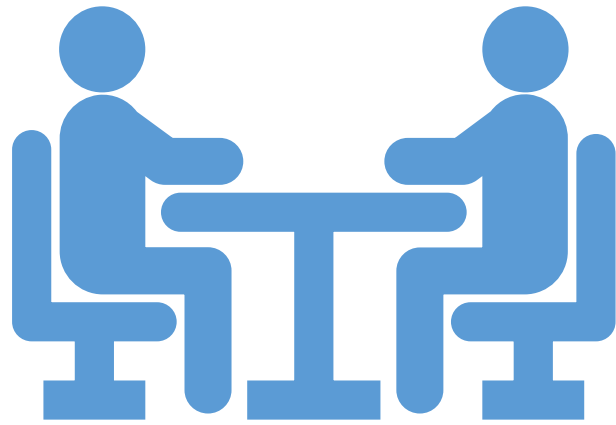
Demonstrating experience in the bus sector

- **Appraisal and Evaluation (T5)**
 - How did you robustly choose between the different options available? How did you specify and/or implement an approach to checking success?
- **Transport Models and Forecasting (T4)**
 - How did you project future bus demand (and highway impacts) with and without your proposals?

The Portfolio of Evidence

- Application Form
- Copies of academic certificates
- CV
- Organisational Chart
- Project synopsis
- Competence Record Forms
- CPD record
- Personal Development Plan (PDP)





Professional Review Interview

- 2 reviewers
- Around 60-90 minutes
- Starts with a 10 minute project presentation by you
- Followed by a professional discussion

What are your reviewers looking for?

- Fundamentally we want you to pass!
- We will ask some challenging questions – but the process shouldn't be awful...
- Use your presentation to showcase your competencies
- Try to keep your answers relatively short, there is a lot to get through in the time. Take a moment to plan your answer rather than leaping straight in
- Have a plan in case you can't remember what seems a vital piece of information in the moment
- We are looking for flexible and creative transport planners with a broad range of skills

The background of the slide is a grayscale photograph of a desk. On the left, there is a calendar with dates 16, 23, 29, 30, and 31 visible. In the center, a white computer keyboard is partially shown. On the right, a white pen lies diagonally. The overall scene is a workspace, suggesting a professional or academic context.

Starting point

- Membership of CIHT, TPS or CILT
- Check your eligibility
- Review the competencies and your experience
- Find a mentor

Key dates and fees

Professional Review Deadline (£475)

Usually

April with interviews in May/June

September with interviews in November

Senior Route (£475): apply at any time

Portfolio of Technical Knowledge (£125): apply at any time

Technical Report (£125): apply at any time



Further information

<https://www.ciht.org.uk/transport-planning-professional>

education@ciht.org.uk

- Scan the QR code to find out more about CIHT membership or visit

www.ciht.org.uk/become-a-member

- membership@ciht.org.uk





Questions?